

VISUAL EVIDENCE – UNWRAPPING THE GALLOWAY HOARD

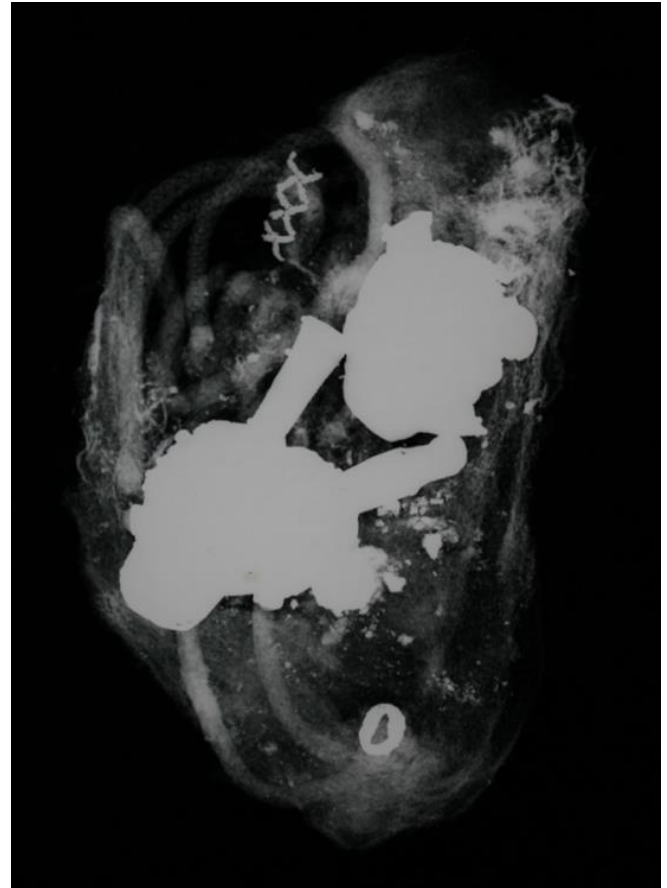


Figure 1 (above) Three distinct caches in the lower deposit of the hoard: leather-wrapped silver bullion (top lower); a silver arm-ring cluster containing a wooden box (top right); and a silver-gilt lidded vessel (top left).

Figure 2 (lower left), three layers of textiles wrapping the silver-gilt lidded vessel.

Figure 3 (lower right), lid off, first view inside the densely packed vessel containing a range of glass beads, pendants, brooches, curios and heirlooms, with traces of cord, wrapping, and bundling.





Inside the lidded vessel:

Figure 4 (top right and left) The 'aestel' bundle, with x-ray showing cord and gold jewels.

Figure 5 (bottom right) Rock crystal jar wrapped with silk-lined leather pouch.

Figure 6 (below) A large gold-mounted 'black-stone' pendent with wrapping

